

IBC 2022 SPECIAL EDITION

Quarterly
newsletter

Issue 08 / 2022

We are back! if you missed us at ANGACOM, you have another chance to meet us at the upcoming IBC 2022 in Amsterdam (Sep 9th – 12th).

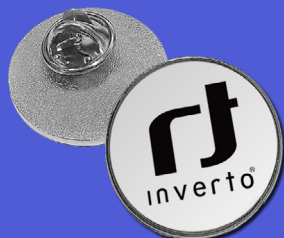
Hall 1, Booth C20

Reach out to us by email before the show to pre-book a meeting to make sure your regional sales manager is available, or just show up and meet one of the Team members. We'll be easy to spot: all of us will be wearing the pin shown below on our jackets.

Our booth will be packed with new products and solutions and to help you focus on the cool stuff, make sure you don't miss seeing those on our IBC sneak peek list.

Come meet us on our booth, our team will have tons of advice for you at IBC 2022, guaranteed!

The Inverto Team



\\ IBC sneak peek \\

- **airscreen Live™** – our unique end-to-end cloud-based solution for **mABR** content delivery over satellite based on the latest cloud, mobile and **DVB-NIP** tech stacks. **airscreen Tality™** – finally a cost-effective, comprehensive and secure **hospitality TV solution** [Live Demo](#)
- **OneSAT™** – get acquainted with our range of super **low SWaP flat panel antennas**
- **Unifiber™ optical LNBS** - satellite TV distribution over **fiber** had never been easier and quicker to setup
- **Unicable II®** (dCSS/dSCR) New & improved range of multiswitches for super **low-power MDU/IRS installations**
- **PRO dish antennas** product range of operator-grade **high quality dish antennas**
- **SmartRiser** - digital transformation finally reaches the risers, explore how cloud and mobile technologies put you in control of your MDU/IRS installations (requires pre-booking) [Private Demo](#)

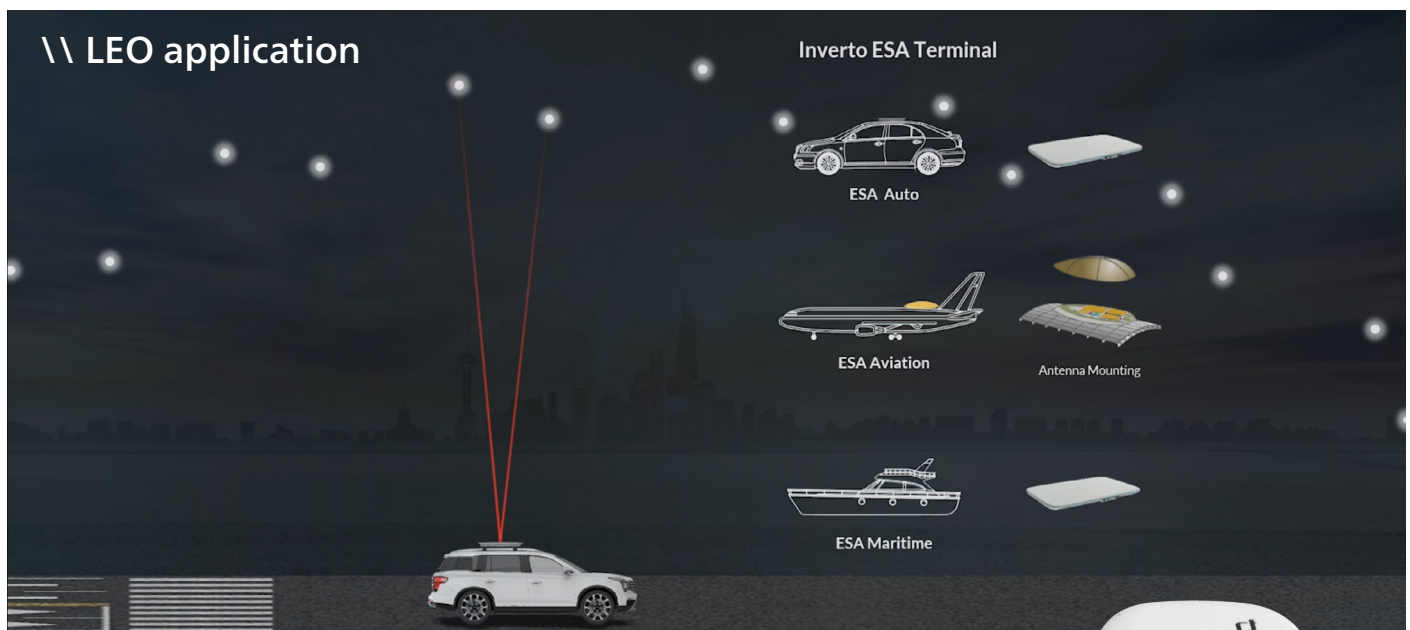
Continue reading for more details about these new exciting technologies.

\\ OneSAT™ flat panel antennas

Our OneSAT™ flat panel terminals are a complete connectivity solution ready to provide on-the-go communication. The terminals are based on a cost-effective electronically steered multi-beam antenna design, boasting a low-profile, low weight, low power consumption and a built-in Wi-Fi access point, offering a highly portable easy-to-use and easy-to-install product to provide seamless satellite broadband connectivity when and where you need it. The OneSAT™ product range consists of multiple antenna designs covering Ka and Ku bands and a variety of mobile broadband over satellite applications for maritime, vehicles, helicopters and airplanes as well as fixed broadband services over satellite in LEO, MEO or GEO network constellations.

Main features

- Ka or Ku bands
- Outstanding SWaP - ideal for all “on the move” applications at air, land and sea
- Ideal for fixed broadband communication over LEO, MEO or GEO networks for applications such as MNO towers, Oil & Gas, etc. . .
- All in one - Integrated terminal equipped with everything needed for operation and quick connection including a Wi-Fi access point
- No moving parts providing long-term reliability and lower maintenance costs for all use case scenarios
- Easy set up – no calibration, self-tuning with fast signal acquisition time



Watch our video [here](#)



\\ PRO dish antennas

The new PRO series of satellite dish antennas integrates high quality, high performance and cost-effective design, addressing quality-conscious tier-1 DTH operators and leading brands worldwide. Continuing to uphold our market leading position, the PRO series of satellite dish antennas boasts robust mechanical structure design, are easy and quick to install and offer unparalleled reliability, all of which have become synonymous with the Inverto brand and its ODU products. Supplied with super solid plastic or steel reflector brackets, these 60, 80 and 90cm field proven designs are a safe choice for a trouble-free installation. Manufactured to strict quality standards, our PRO satellite dish antennas are made of high quality galvanized steel, undergo a rigorous anti-corrosion process applying polyester powder coating to prevent long-term corrosion and ensure durability and optimal reception-performance for DVB-S2 HDTV and UHDTV broadcasts across the globe.

Main features

- Easy and quick to install - one-size spanner, LNB arm with cable pass-through
- Lasting quality - durable parts and solid construction
- High quality uniform surface with anti-corrosion coating
- Perfect reception quality with high gain across the band
- Bulk or single packaging



\\ Unifiber™ Optical range is now enhanced by the addition of an Optical LNB

The Unifiber™ optical LNB delivers a complete satellite broadcast over a single optical wavelength. Two versions are offered which are 1310nm for smaller type installations or 1550nm which is designed to operate with an EDFA and offer deployment to much larger developments. Think of fibered-up gated-communities or high-rise MDUs where you'd want to offer DTH content without a myriad of dishes on the roof.

Main Features

- Low noise down-converter with a single 1310nm / 1550nm wavelength fiber optical output
- FC/UPC optical connector
- Optical output AGC optimizing signal transmission over fiber
- +4dBm output optical power
- F-type port for DC-in powering and dish alignment

Get familiar with our complete Unifiber product portfolio at in our [Unifiber™ Catalogue](#)

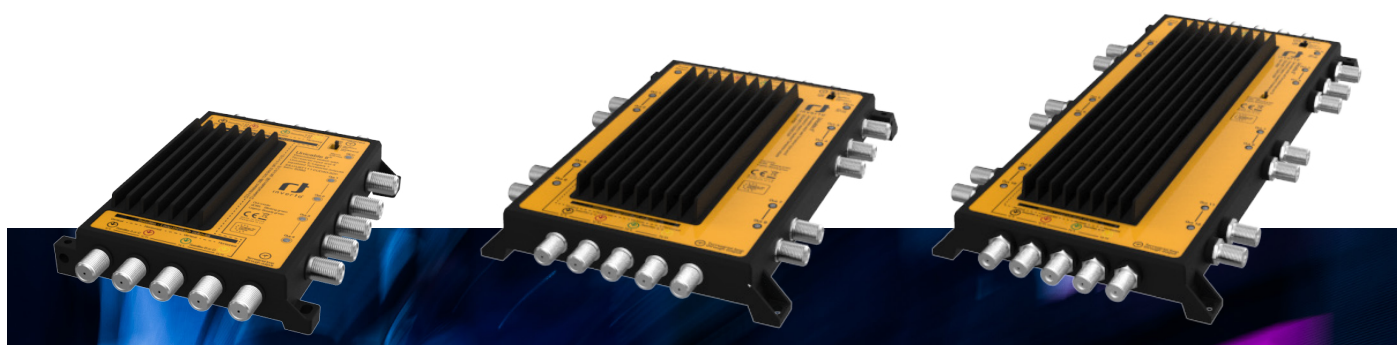


\\ New range of Unicable II® (dCSS/dSCR) multiswitches

We take the opportunity of IBC to introduce our upgraded range of Unicable II® multiswitches. The Inverto switches have been hugely popular with the installers and the new upgraded range has now been enhanced with the following features:

Main features

- The satellite output ports are now powered from the user's satellite receiver located in the home.
- The terrestrial trunk line and powering for the LNB can be supported by a single power supply.
- The terrestrial signals over the switch outputs have unity gain across all ports.
- There is zero signal loss in the terrestrial trunk line and there should be no further in-line amplification requirements.
- Switching between Quattro or Quad LNB inputs have been simplified by the addition of an external toggle switch on the unit.
- A twelve (12) output version has been added to the range to compliment the two (2), four (4) and eight (8) output versions.



Join us to benefit of technical deep dives, live demonstrations, customer examples, and Q&A with our management, sales and product teams. Looking forward to seeing you in person in Amsterdam. Now, if you are not attending, we'll definitely miss you but we'll be just as happy to set up a one-on-one video call to cater to your specific requests.

The Inverto team
IBC 2022 Sep 9th – 12th, RAI Amsterdam
Hall 1 Booth C20
sales@inverto.tv