



Unicable II Programmer

Model: IDLU-PROG02-00000-OPP

Item: 5393

Inverto's Unicable II Programmer is an essential installation tool helping to configure and diagnose any Unicable II LNB or Multiswitch using a PC.

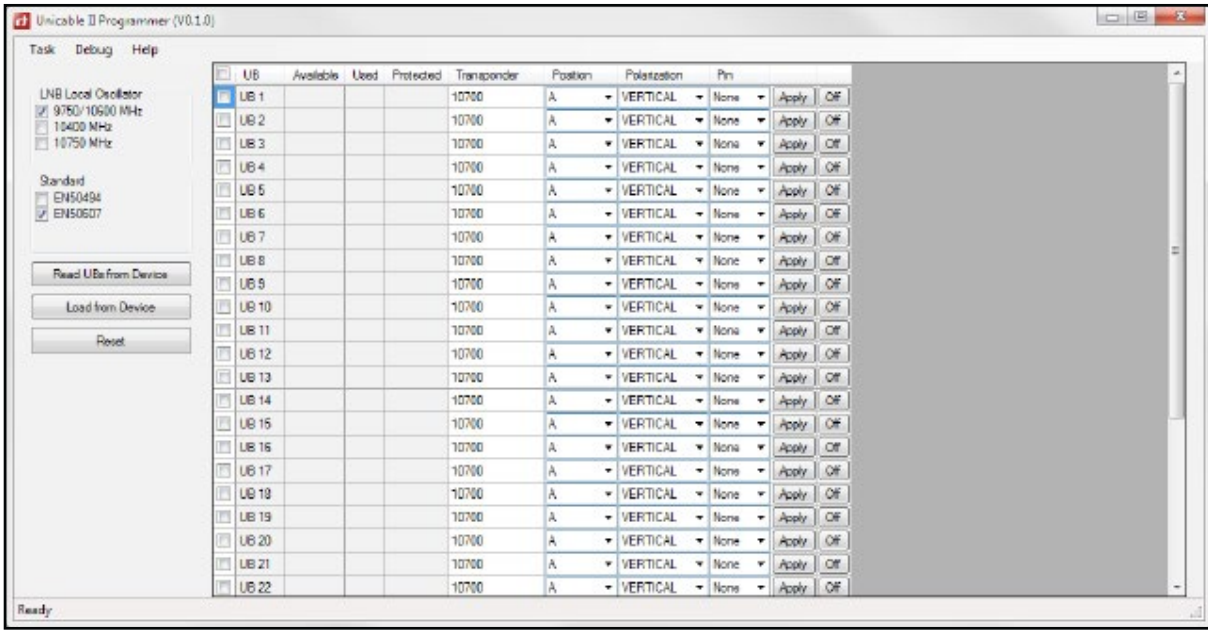
The Inverto's Unicable II Programmer software tool for PC provides an easy to use and intuitive graphic user interface allowing the installer to modify the default parameters of the installed Unicable II LNB or Multiswitch including for example, the operating mode (Static or Dynamic), the RF/IF frequency mapping grid for Static mode, the IF frequencies of the User Bands, the output power level and the protocols used over each User Band (EN50494/EN50607).

The PC software tool allows to carry out diagnostic tests on the connected LNB or Multiswitch, retrieve diagnostic logs and identify potential installation health issues.

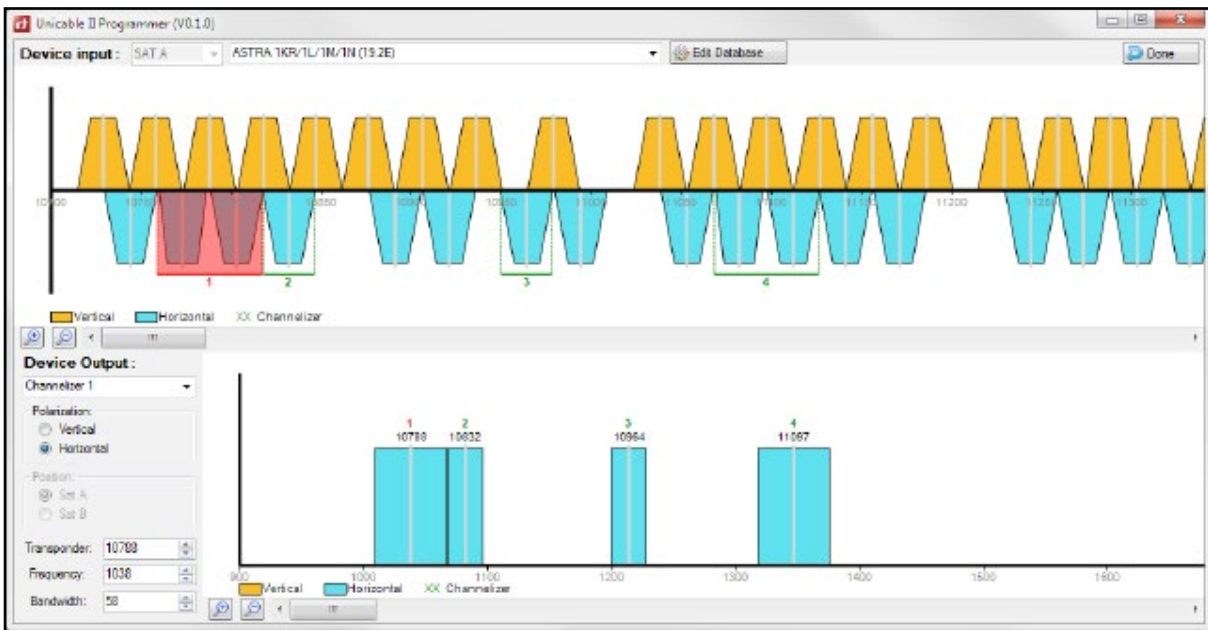
The programmer provides several options for updating the firmware or the configuration file of the connected LNB or Multiswitch through the PC. It also features an internal memory that can store a configuration file prepared on the PC and transmit it later to a connected LNB or Multiswitch in the field by pressing a dedicated button releasing the installer from carrying his laptop to the field.

The Programmer device can be integrated into an existing installation, power the LNB or Multiswitch unit using the supplied AC/DC power adapter, and allow a parallel connection to a PC over USB for monitoring and configuration.

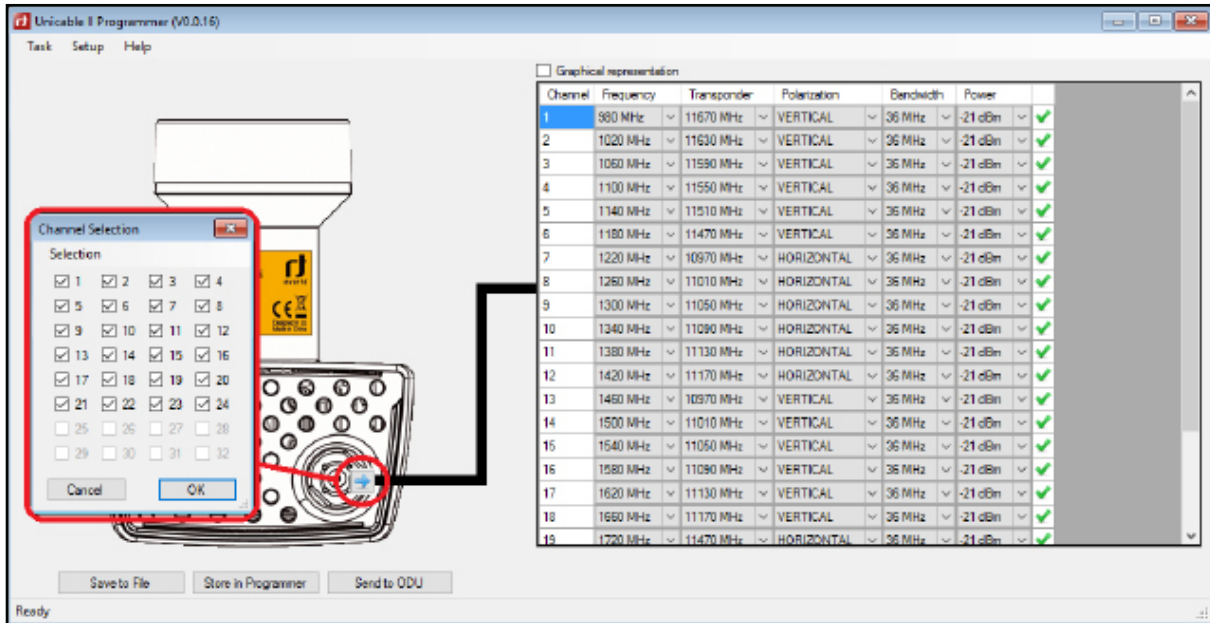
The Programmer is supplied with an external AC/DC adapter and a USB cable.



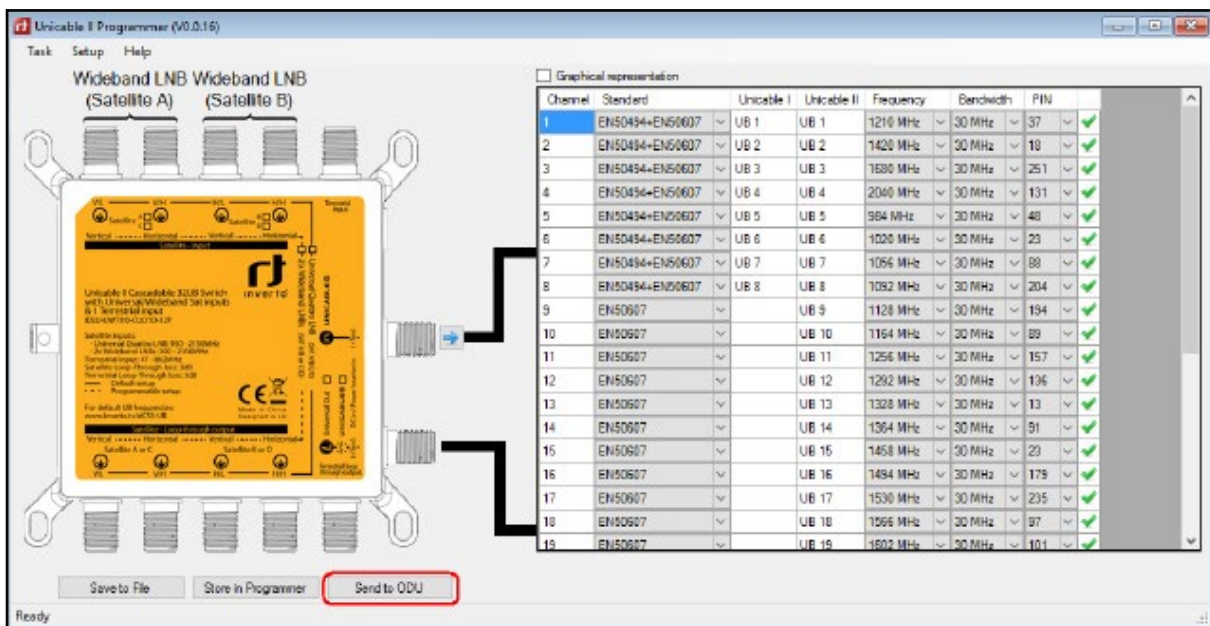
User Band and Protocol testing tool



Static mapping editing tool

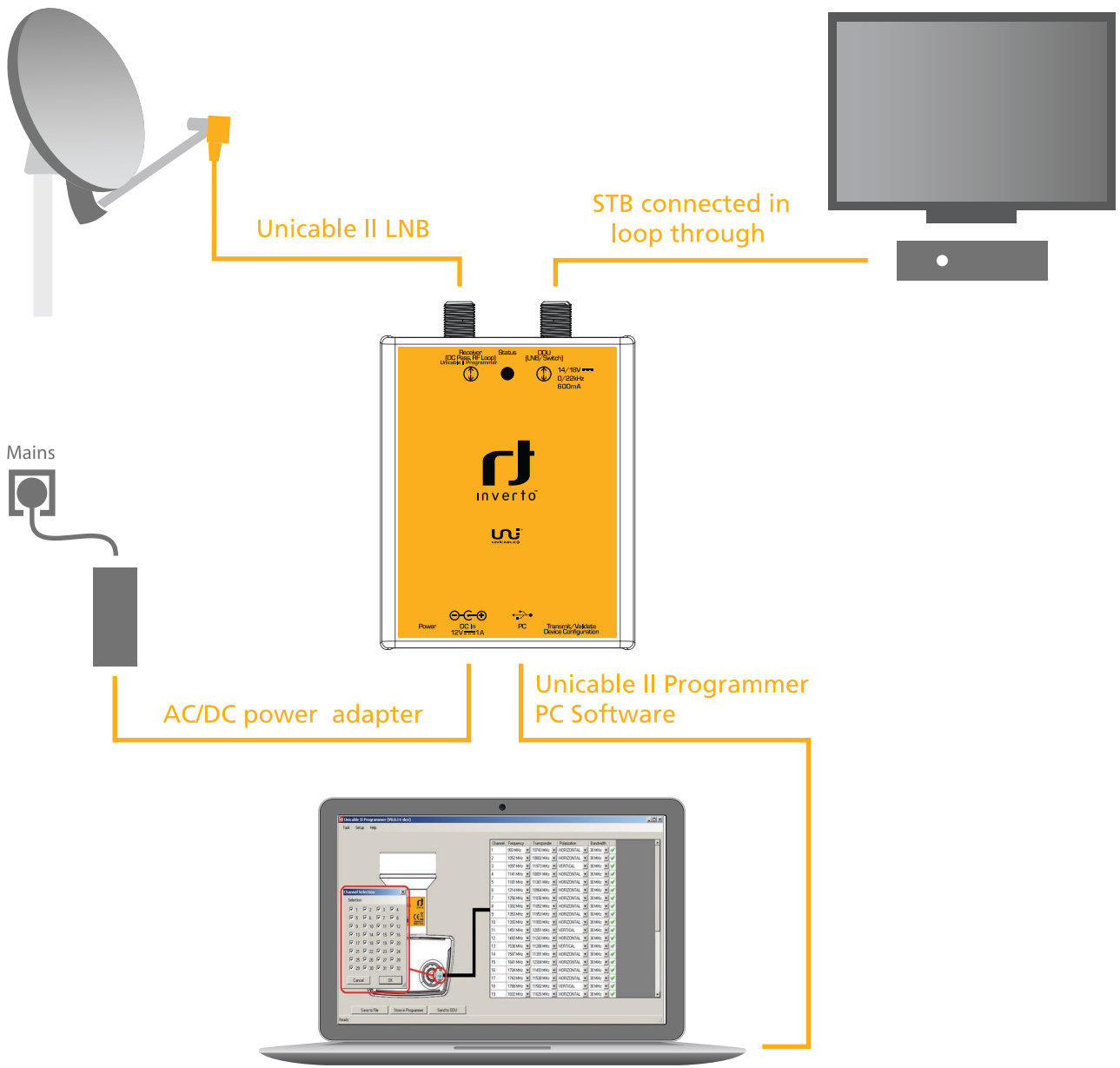


Unicable II LNB configuration screen



Unicable II Multiswitch configuration screen

Setup diagram



Technical Specifications

Interfaces	1x Satellite IF, F-type 1x Satellite IF loop-through out, F-type 1x USB (Type-B)
Loop-through loss	1dB max.
Control protocols:	DiSEqC™ commands extension according to CENELEC EN50494 and/or EN50607, DiSEqC2.0.
Display and keys: - Activity LED	Yellow blinking: Communication activity between ODU and Programmer Green: Configuration files in ODU and Programmer are identical
- Power LED	Red: The Programmer is powered over the USB connection Orange: The Programmer is powered over the 12V DC input
- Button	Short press: Transmit a configuration file stored in the Programmer to the ODU device Long press: Download the configuration file of the ODU and compare to a file stored in the Programmer
Power consumption Programmer only	5VDC, 50mA (can be powered over the USB interface)
ODU power	13V-18V, 600mA max. - powering and programming of an ODU device requires use of the supplied AC/DC adapter
Dimensions	107mm x 77mm x 30 (W x D x H)
AC/DC adapter	Input voltage: 100-240VAC, 50/60Hz, 0.8A max. Output voltage: 12VDC Output current: 2A Short circuit protection: Yes Low Voltage Directive (2014/35/EU) Electromagnetic Compatibility Directive (2014/30/EU) Eco-Design Directive (2009/125/EC)

For purpose of brevity, some product descriptions in this sheet remain at platform level and may not be referred to as detailed datasheets of the products. Inverto Digital Labs reserves the right to amend, omit or add products, product-lines, and / or features without notice. As product specifications may change without notice, always contact Inverto to obtain the latest product specification sheets.

For further details contact: sales@inverto.tv

FTA Communication Technologies S.a r.l Tel. +352 264 367 1 Fax. +352 264 313 68

